

Mountainview Animal Hospital

SPRING NEWSLETTER

The bottom Line

Mountainview Animal Hospital is moving to a new unit in the South Georgetown Centre.

Look for us in our new location sometime in late April or early May.

Our mailing address will change just a little bit; from unit # 4 to Unit # 12.

WE ARE MOVING AFTERALL

Remember, in the last newsletter before Christmas I wrote that we were not moving; well things have changed. I have spent the last two years attempting to negotiate a fair and reasonable deal for the relocation of Mountainview Animal Hospital so that Shopper's Drug Mart could expand. When the last rounds of negotiations with the landlord collapsed I was adamant that I would not waste any more time and money discussing a relocation and I finally felt that the fighting was over. Relieved I wrote to you that we were staying exactly where we have always been. However, shortly after New Years I was approached once again by the landlord to try round four of negotiations. Reluctantly, I agreed but this time I had my lawyer do the talking. Well guess what, it worked; we finally came to a deal that I find acceptable for the clinic.

While I am not happy with the time, stress and money this has cost me, and we still have a tremendous amount of work to do, to build and move to the new location, I do think the relocation is in the best interests of my clients. And in the end, if my clients are happy, it will all have been worthwhile.

We will remain in the same mall, just a few units up from where we are now. Although the new clinic is not significantly bigger than the current one, its reception area is a lot wider so there will be a lot of windows and sunlight. The current clinic has lost all of its parking spaces with the expansion of Shopper's Drug Mart. The new unit will have a lot of parking right in front of the door, making it easier for older or lame pets to come in from the car. The new location of Mountainview Animal Hospital will also be nice and visible from the street, so we will be easy to find again.



The bottom Line

Did you know that there is more to choosing a floor tile than how nice it looks? There are ceramic tiles, porcelain tiles and natural stone tiles. Ceramic tile is made of a clay base. This base clay can be left natural like Terra Cotta Tiles or glazed. The glazing comes in a variety of colours and patterns. Porcelain tiles are made of a harder, less porous clay. The increased density of porcelain tiles makes them resistant to stains and more suitable for outdoor use. Porcelain tiles also come glazed or unglazed. Unglazed porcelain tiles have the colour throughout the tile and therefore show scratches and chips less than glazed tiles. They are also less slippery when wet than glazed tiles, but they are more likely to stain.

If choosing between ceramic and porcelain, glazed and unglazed, colour and style were not confusing enough, add the huge price variation between tiles. No wonder I have had a head ache some days.

I hope you like the tile we chose for the new location of Mountainview Animal Hospital.

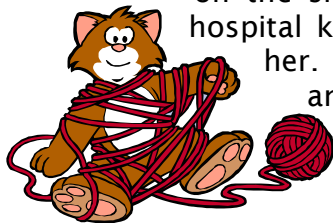
Most of the clinic will look pretty much the same as the old clinic except the reception area. The current unit has such a wonderful layout that we tried as much as possible to replicate it. This did not work in all areas because although the units are fairly similar in size, the shapes of the units are different. Although it might have been fun to start fresh with all new cabinets and colours, we are not getting enough money from the landlord to do that, so we are re-using as much as possible. Besides, re-using the cabinets and counters is more environmentally friendly, and I still like my blue countertops.

The reception area will have a few new items. One such item is a new pet food cabinet; this cabinet will have glass doors on it to keep Tux out. We are hoping that the money we save by preventing Tux from chewing open pet food bags will eventually pay for the new cabinet. Tux won't be happy though.

Originally we were hoping to be moved into the new unit by April 25th. Because there were some delays in transferring the new unit on the landlords end, we may not reach that goal. We are working hard to be finished as soon as possible, so look for us in the new location by late April, early May at the latest.

TIME WITH TUX

I'm such a stud. Do you think I am kidding or just tooting my own horn? Well, I'm not, I really am a stud; just ask the ladies. Every time a female sees me she coos and purrs and tries to rub up against me. And I am not just talking about the human ladies, the females of the feline persuasion love me too. Particularly the young females, they really seem to respond to my rugged good looks. But I am not just a pretty face you know; I am a nice guy too. Every female gets my full attention, from the moment she arrives at the hospital until that unfortunate time when she is ripped out of my life and sent back home. When a female is first brought in, I sit on her carrier and peak in on the sides, just to say 'hi'. Then once she is placed in the hospital kennel, I climb the bars and hang out, getting to know her. Some of the more flirty girls even rub noses with me and reach out through the bars for me. I really like the naughty girls. Funny thing though, they all seem to lose interest right after the doctors perform that surgery they call a 'spay'.



COYOTE WARNING

Clients whose yards back on to the ravine or other green belts should be vigilant of their pets after dark. There have been a number of pets attacked in their own back yards by coyotes. These unfortunate pets were let out in the yard for a toilet break when their owners either heard or witnessed the attack. The injuries to the pets have been quite serious. Hopefully with the nicer weather the coyotes will find hunting in the deeper woods more rewarding. Until then, turn more lights on, check your yards first or go out with your pets on a leash in the front yard where they may be safer.

The bottom Line

An infected dog can have over 200 heartworms in the heart and adjoining blood vessels.

The drug companies that produce the various heartworm preventative medications will guarantee your dogs protection only if you use the medication correctly and have your dog's blood tested every year.

Most boarding facilities will require your dog to have had a Kennel Cough vaccine at least five days before admission.

Many puppy training facilities are also strongly recommending the Kennel Cough vaccine to their clients.

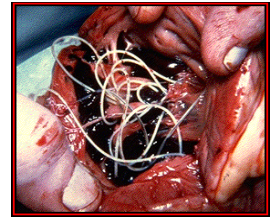
Leptospirosis is a Zoonotic disease; meaning people can become infected too.

Caution! Some flea products marketed in the pet stores to dogs are extremely toxic to cats. Always read the label carefully; better yet, ask us about choosing the safest products for your pets.

*** IMPORTANT SUMMERTIME REMINDERS ***

Heartworm Disease

Heartworm disease is caused by a large worm which can live in a dog's heart and adjoining blood vessels. Permanent and potentially fatal damage to the heart, lungs and liver can occur long before there are any visible signs. The heartworm is spread from one dog to another by the mosquito. Treatment is available but is often costly and difficult. A long recovery time can be expected and often irreparable damage to the heart, lungs and liver has already occurred.



Fortunately, prevention is so easy. Simply give your dog the preventative medication once a month from June through November. There are various types of heartworm medication available; some will also include prevention for intestinal worms and/or fleas. Blood testing your dog prior to starting the medication is an important part of prevention and is strongly recommended. Early detection of a heartworm infection before your dog gets sick will not only increase the success of the treatment and ensure a complete recovery, but will also help reduce the spread of the disease.

Leptospirosis Vaccine

Leptospirosis is a serious and sometimes fatal disease that can afflict dogs of all ages. Dogs most commonly become infected by drinking from rivers, streams, puddles or ponds that have become contaminated by the urine of other infected animals (raccoons, rats and skunks). Leptospirosis tends to attack the liver and kidneys causing a variety of symptoms including fever, nausea, lethargy, abdominal pain and increased urination. Many dogs afflicted with Leptospirosis will die from it. If your dog has access to wildlife, roams free, or drinks from water sources that may have become contaminated, he or she should be vaccinated against Leptospirosis this spring. We would be happy to discuss the advantages and disadvantages of vaccinating your dog against this disease.

Kennel Cough Vaccine

Bordetella bronchiseptica, better known as Kennel Cough, is a bacterial infection that causes tracheobronchitis. Affected dogs will exhibit a characteristic dry, harsh, hacking cough that can last up to 3 weeks. Some dogs will cough so hard that they gag afterward. Dogs are most commonly infected in kennels, pet stores, exhibitions, grooming salons and off leash parks where they are in close contact with other dogs. Although most dogs require only supportive care to recover, young, older or otherwise weaker dogs can develop a serious pneumonia that may require them to be hospitalized. Vaccination is recommended for dogs going to boarding kennels, puppy classes, grooming facilities or off leash parks. If your dog is not vaccinated against Kennel Cough and is likely to be exposed, please call us to schedule an appointment for a vaccination against *Bordetella bronchiseptica*.

Fleas



Both cats and dogs are at risk of becoming infested with fleas during our warm summer months. Fleas are extremely irritating to your pet. Flea bites can cause itchy skin rashes and even serious allergic reactions. Left untreated, just 10 adult fleas can multiply to over 250,000 fleas in only 30 days! Your pet can come into contact with fleas on walks, at the park, or even in your backyard. Those of you who have had fleas in the past know how difficult it is to get rid of them; prevention of flea infestations is much easier, cost effective and safe. Call us to start your pet on the safest and most effective flea prevention this spring.